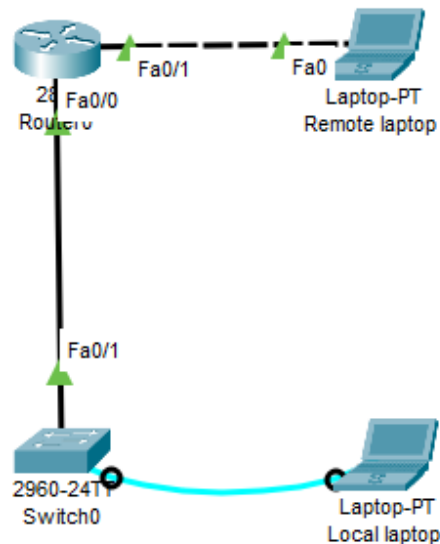


Cisco IOS Switch Basic Setup

Network Topology



Router0 Configuration Commands

```
Router0>enable
Router0#configure terminal
Router0(config)# interface fastEthernet 0/1
Router0(config-if)#ip address 172.16.1.1 255.255.255.0
Router0(config-if)#no shutdown
Router0(config-if)#interface fastEthernet 0/0
Router0(config-if)#ip address 192.168.10.1 255.255.255.0
Router0(config-if)#no shutdown
Router0(config-if)#exit
Router0(config)#exit
Router0#show ip interface brief
```

Interface	IP-Address	OK?	Method	Status	Protocol
FastEthernet0/0	192.168.10.1	YES	manual	up	up
FastEthernet0/1	172.16.1.1	YES	manual	up	up

Remote Laptop Configuration

Remote laptop

Physical

Config

Desktop

Programming

Attributes

GLOBAL

Settings

Algorithm Settings

INTERFACE

FastEthernet0

Bluetooth

Global Settings

Display Name Remote laptop

Interfaces FastEthernet0

Gateway/DNS IPv4

DHCP

Static

Default Gateway 172.16.1.1

DNS Server

Gateway/DNS IPv6

Automatic

Static

Default Gateway

DNS Server

Physical **Config** Desktop Programming Attributes

GLOBAL

Settings

Algorithm Settings

INTERFACE

FastEthernet0

Bluetooth

FastEthernet0

Port Status ☒ On

Bandwidth ☒ 100 Mbps ☐ 10 Mbps ☒ Auto

Duplex ☐ Half Duplex ☒ Full Duplex ☒ Auto

MAC Address 0010.11E1.31D4

IP Configuration

☐ DHCP

☒ Static

IPv4 Address 172.16.1.2

Subnet Mask 255.255.255.0

IPv6 Configuration

☐ Automatic

☒ Static

IPv6 Address

Link Local Address: FE80::210:11FF:FEE1:31D4

Physical Config **Desktop** Programming Attributes

Command Prompt

```
Cisco Packet Tracer PC Command Line 1.0
C:\>ping 172.16.1.1

Pinging 172.16.1.1 with 32 bytes of data:

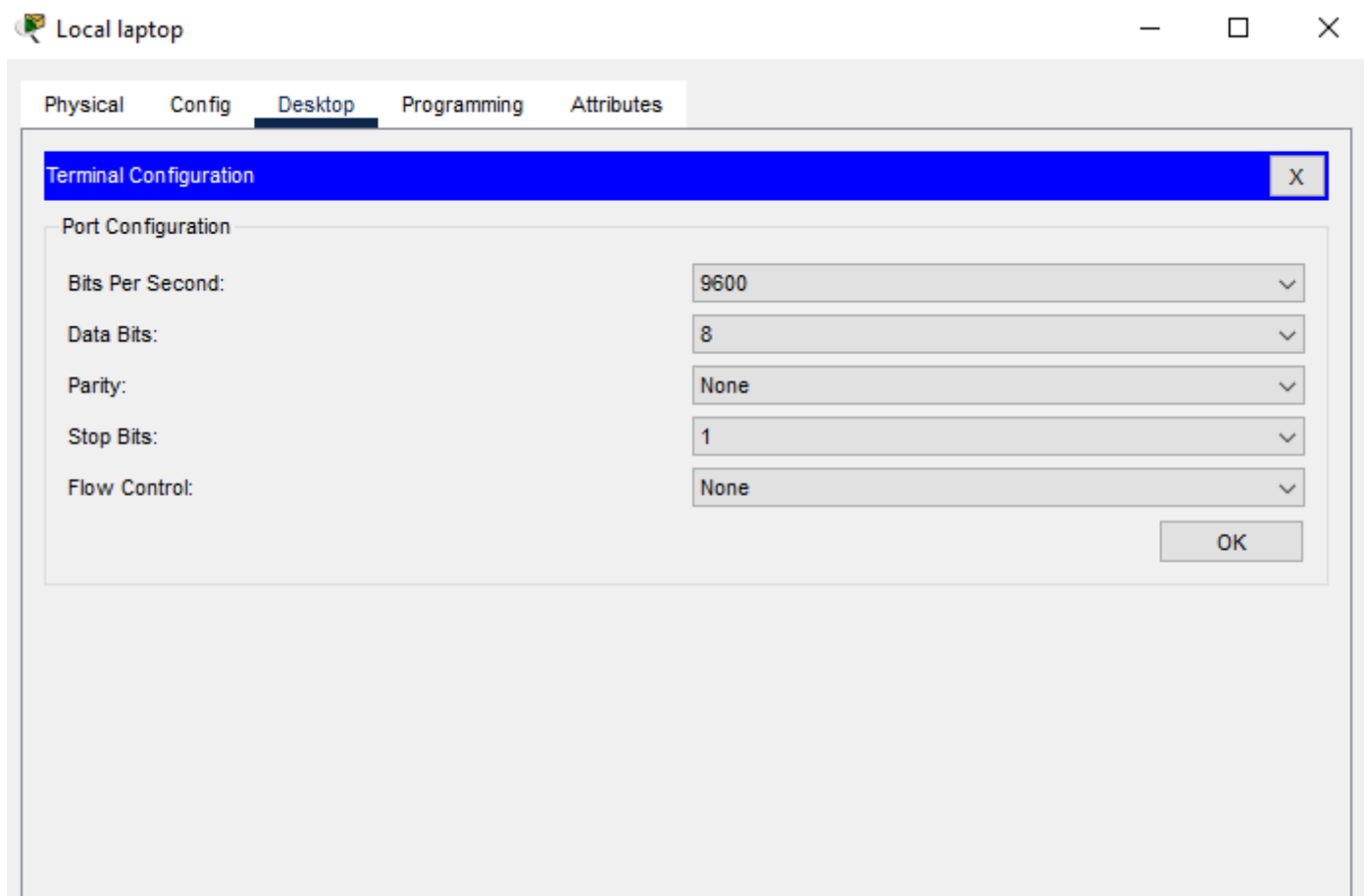
Reply from 172.16.1.1: bytes=32 time<1ms TTL=255
Reply from 172.16.1.1: bytes=32 time<1ms TTL=255
Reply from 172.16.1.1: bytes=32 time<1ms TTL=255
Reply from 172.16.1.1: bytes=32 time<1ms TTL=255

Ping statistics for 172.16.1.1:
    Packets: Sent = 4, Received = 4, Lost = 0 (0% loss),
    Approximate round trip times in milli-seconds:
        Minimum = 0ms, Maximum = 0ms, Average = 0ms

C:\>
```

Switch0 Configuration Commands using Local Laptop and Console Cable

Connect to Switch0 using Terminal

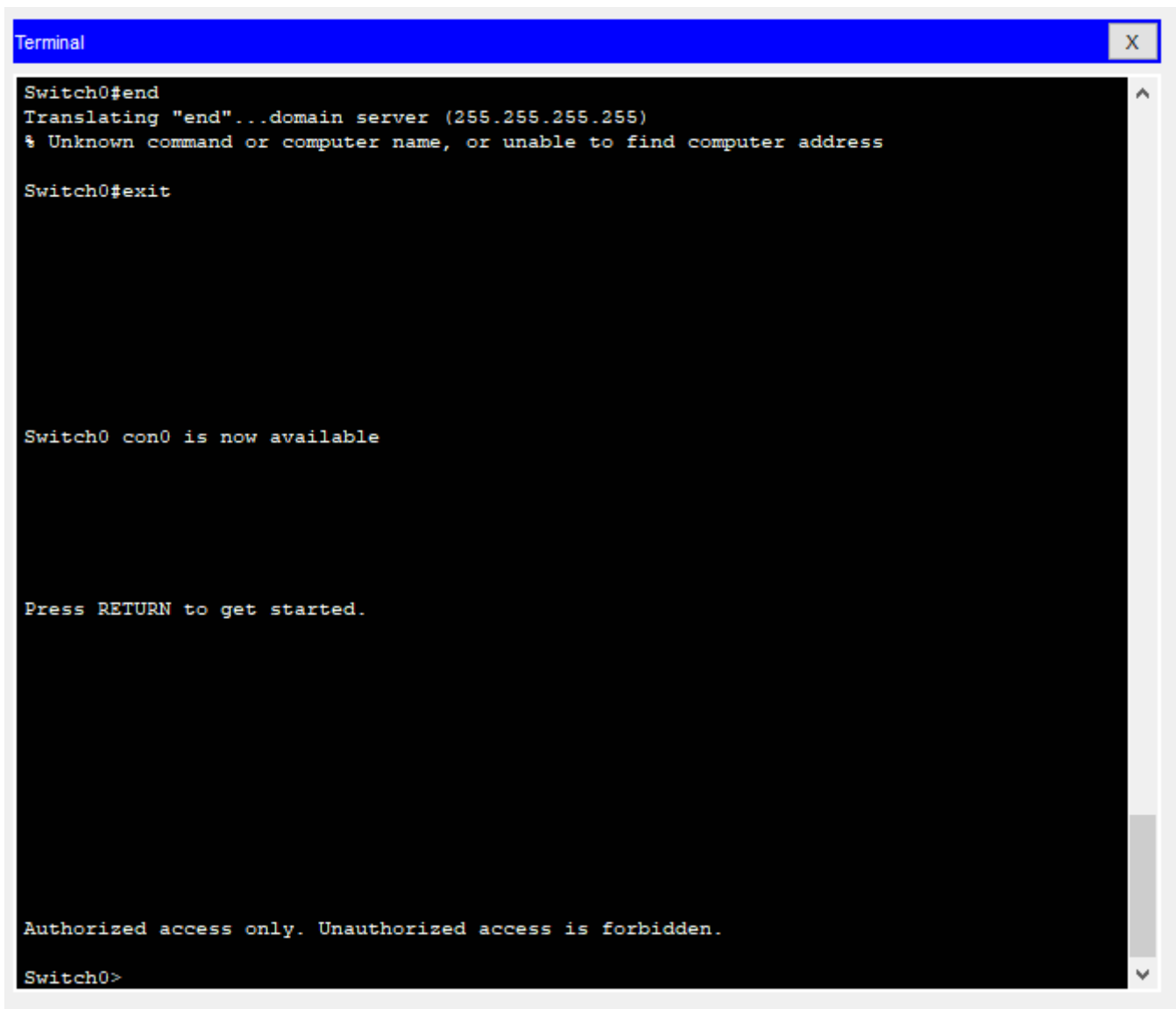


Set hostname of the switch to Switch0

```
Switch>enable
Switch#configure terminal
Switch(config)#hostname Switch0
Switch0(config)#
```

Configure the message of the day as "Authorized access only. Unauthorized access is forbidden."

```
Switch0(config)#banner motd #
Enter TEXT message. End with the character '#'.
Authorized access only. Unauthorized access is forbidden.#
Switch0(config)#end
Switch0#exit
```

A terminal window titled "Terminal" with a blue header bar. The window contains the following text:

```
Switch0#end
Translating "end"...domain server (255.255.255.255)
% Unknown command or computer name, or unable to find computer address

Switch0#exit

Switch0 con0 is now available

Press RETURN to get started.

Authorized access only. Unauthorized access is forbidden.

Switch0>
```

Configure the password for privileged mode access as "cisco". The password must be md5 encrypted

```
Switch0>enable
Switch0#configure terminal
Switch0(config)#enable secret cisco
Switch0(config)#service password-encryption
```

Configure CONSOLE access with the following settings:

- Login enabled
- Password: ciscoconsole
- History size: 20 commands
- Timeout: 5m 30s'
- Synchronous logging

```
Switch0(config)#line con 0
Switch0(config-line)#password ciscoconsole
Switch0(config-line)#logging synchronous
```

```
Switch0(config-line)#login
Switch0(config-line)#history size 20
Switch0(config-line)#exec-timeout 5 30
Switch0(config-line)#exit
Switch0(config)#
```

Configure TELNET access with the following settings:

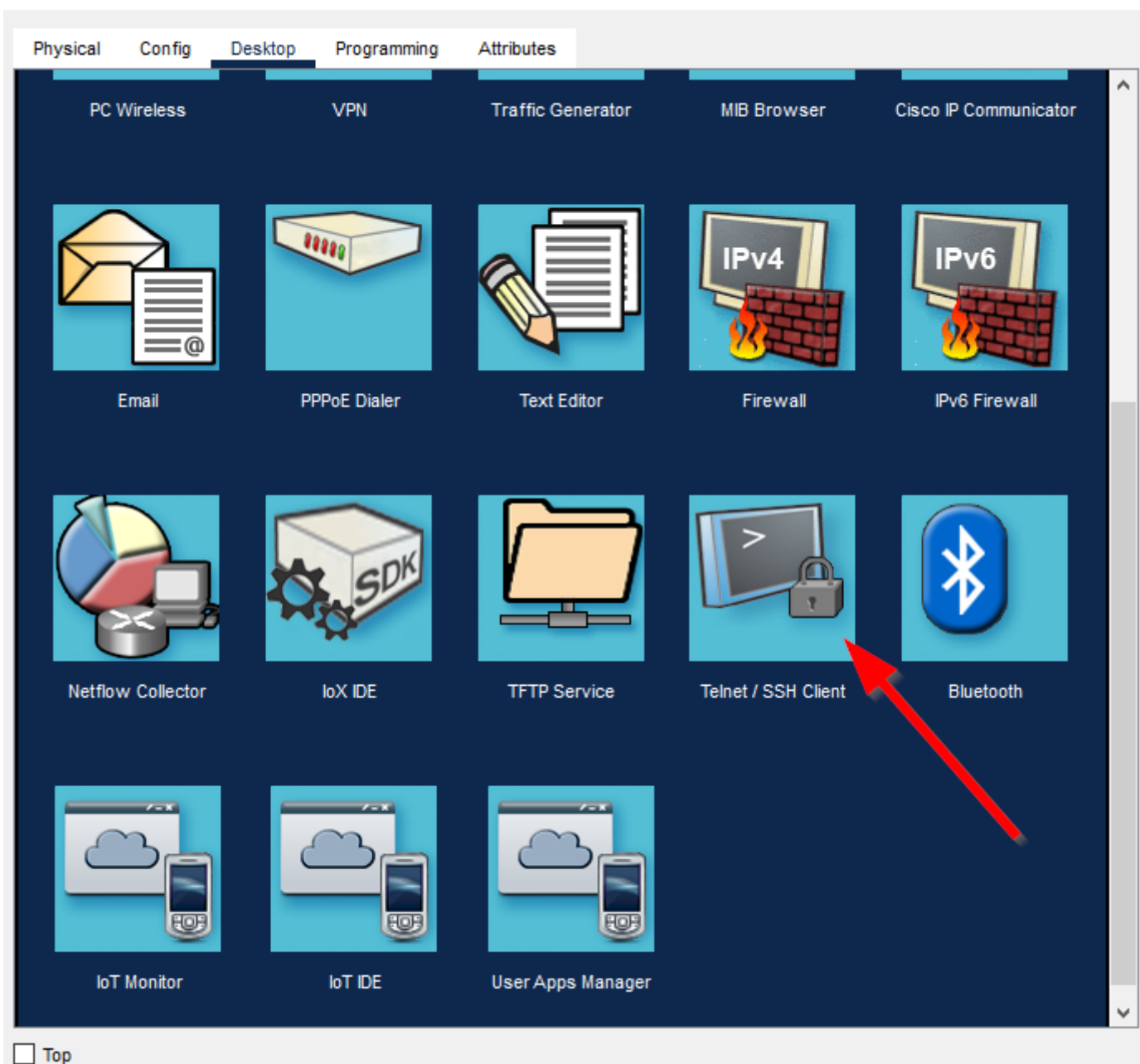
- Login enabled
- Password: ciscotelnet
- History size: 20 commands
- Timeout: 10m 45s
- Synchronous logging

```
Switch0(config)#line vty 0 15
Switch0(config-line)#password ciscotelnet
Switch0(config-line)#logging synchronous
Switch0(config-line)#login
Switch0(config-line)#history size 20
Switch0(config-line)#exec-timeout 10 45
Switch0(config-line)#exit
Switch0(config)#
```

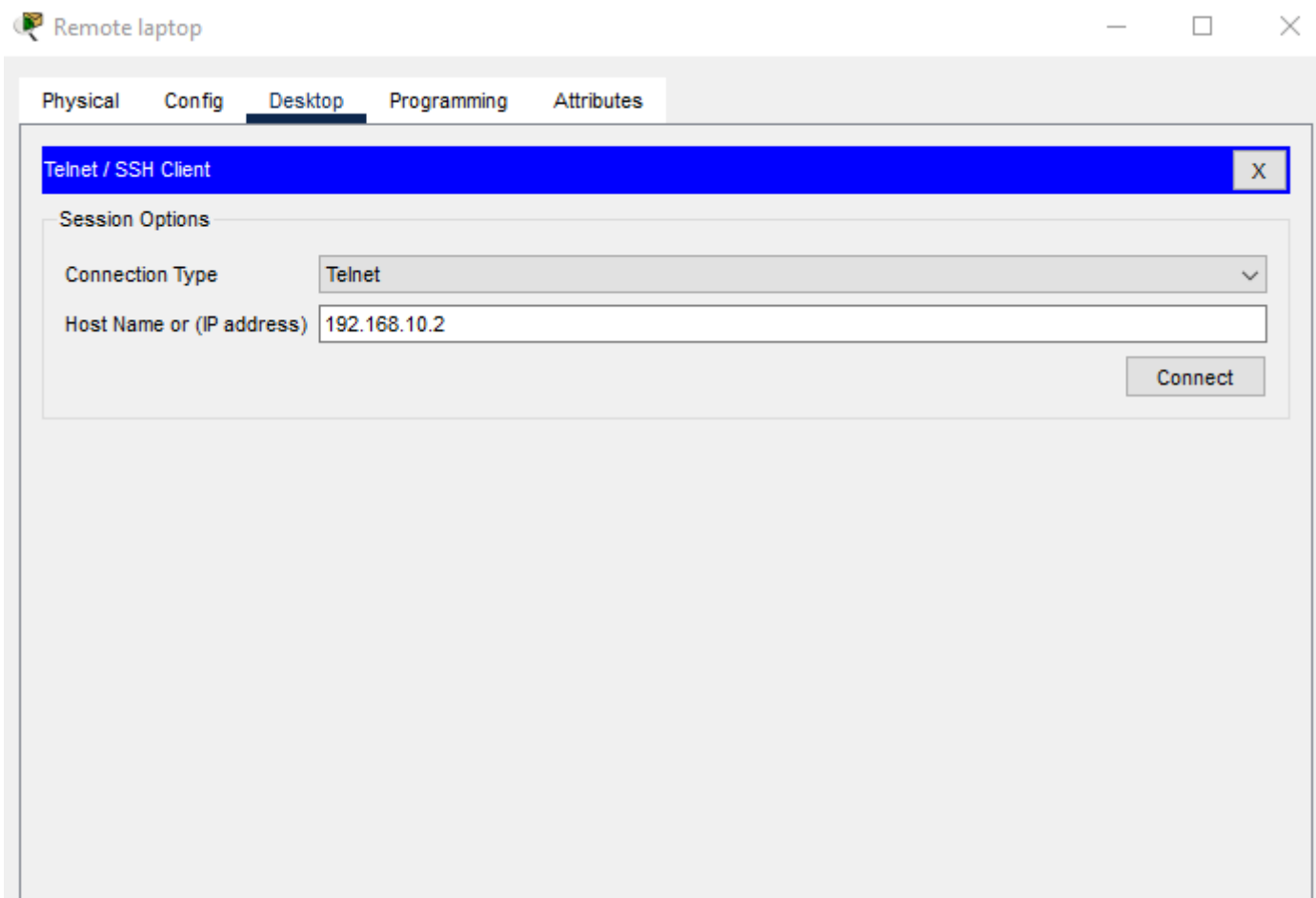
Configure the IP address of Switch0 as 192.168.10.2/24 and its default gateway IP (192.168.10.1).

```
Switch0(config)#interface vlan1
Switch0(config-if)#ip address 192.168.10.2 255.255.255.0
Switch0(config-if)#ip default-gateway 192.168.10.1
Switch0(config-if)#end
Switch0(config)#exit
Switch0>
```

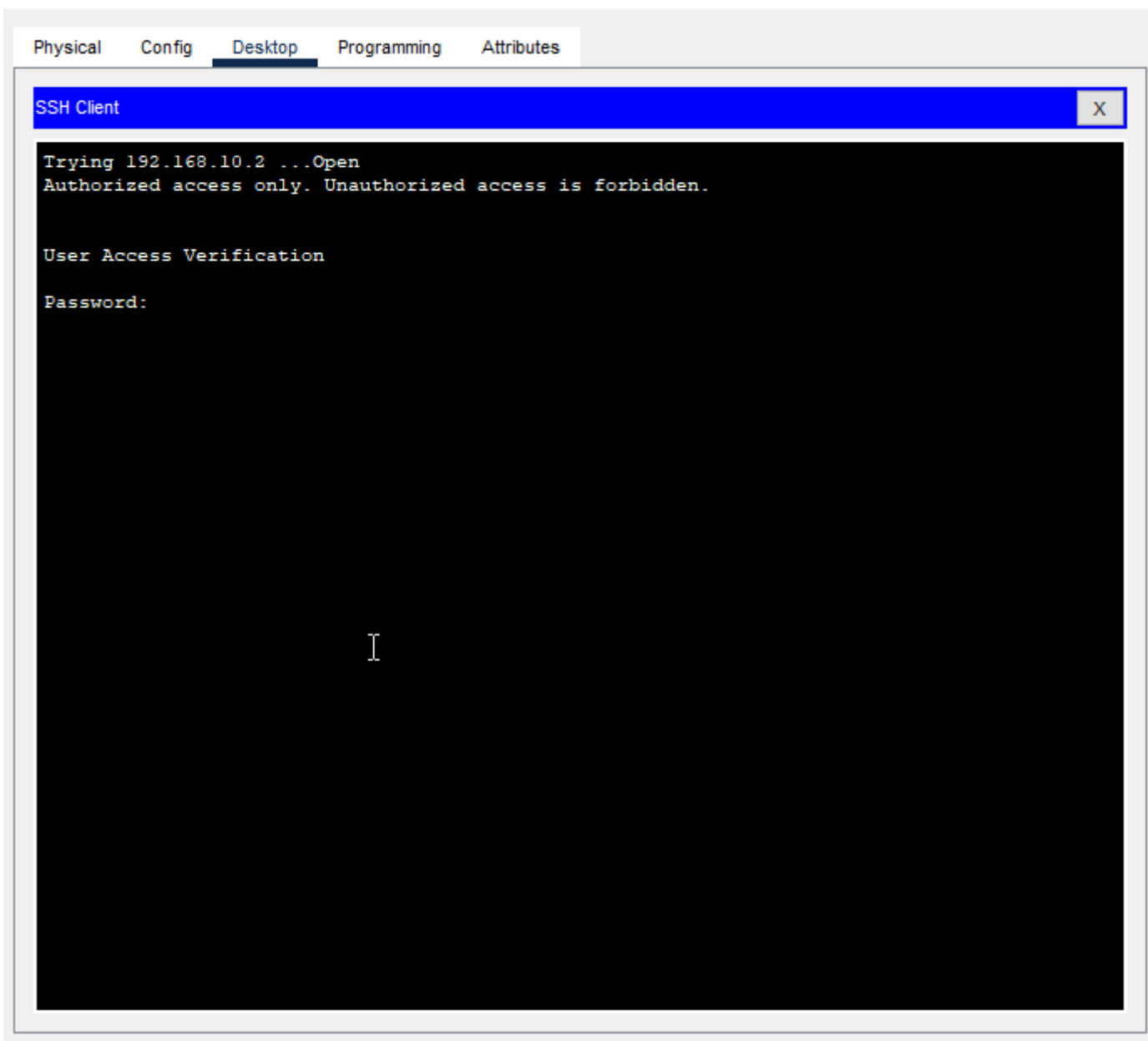
Test Telnet Connectivity from the Remote Laptop Using Telnet Client



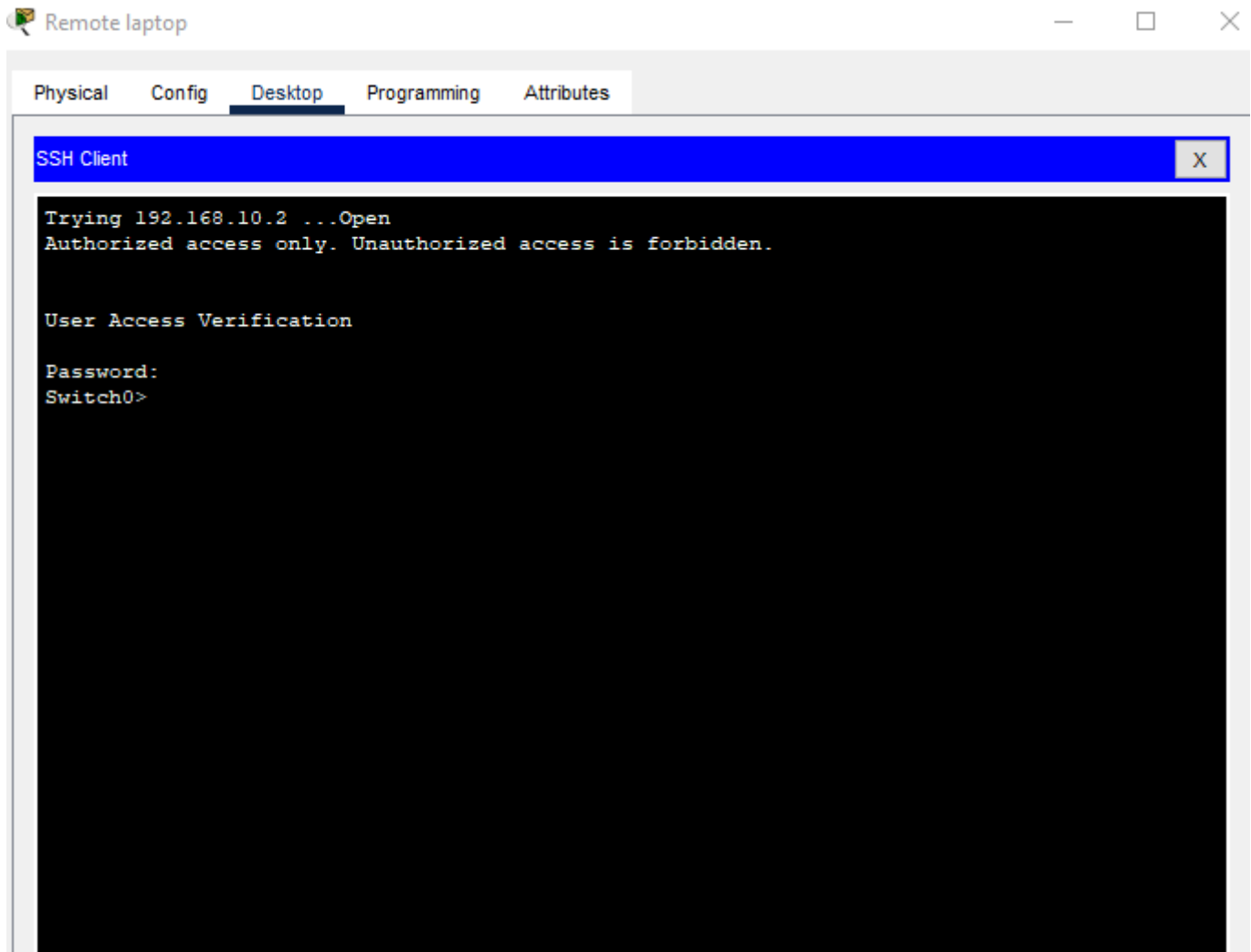
Change the Connection Type to Telnet and then put in Switch0's IP address. Then click Connect.



Notice the MOTD Banner and the prompt for the telnet password. Enter ciscotelnet.



We're in!



Cisco Packet Tracer File

[net8 basic switch setup.pkt](#)

Revision #4

Created 22 December 2022 22:26:30 by Glen Taylor

Updated 24 January 2023 22:41:53 by Glen Taylor